

RV7

REMOTE VFO

by



**DRAKE**

LIMITED WARRANTY

R. L. DRAKE COMPANY warrants to the original purchaser that this product shall be free from defects in material (except tubes and RF output transistors) or workmanship for ninety (90) days from the date of original purchase.

During the warranty period the R. L. DRAKE COMPANY or an authorized Drake service facility will provide free of charge both parts (except tubes and RF output transistors) and labor necessary to correct defects in material or workmanship.

To obtain such warranty service, the original purchaser must:

- (1) Complete and send in the Warranty Registration Card.*
- (2) Notify R. L. DRAKE COMPANY or its nearest authorized service facility, as soon as possible after discovery of a possible defect, of:*
 - (a) The model number and serial number, if any;*
 - (b) The identity of the seller and the approximate date of purchase;*
 - (c) A detailed description of the problem, including details on the electrical connection to associated equipment and the list of such equipment.*
- (3) Deliver the product to the R. L. DRAKE COMPANY or the nearest authorized service facility, or ship the same in its original container or equivalent, fully insured and shipping charges prepaid.*

Correct maintenance, repair and use are important to obtain proper performance from this product. Therefore, carefully read the Instruction Manual. This warranty does not apply to any defect that R. L. DRAKE COMPANY determines is due to:

- (1) Improper maintenance or repair, including the installation of parts or accessories that do not conform to the quality and specifications of the original parts.*
- (2) Misuse, abuse, neglect or improper installation.*
- (3) Accidental or intentional damage.*

All implied warranties, if any, terminate ninety (90) days from the date of the original purchase.

The foregoing constitutes R. L. DRAKE COMPANY'S entire obligation with respect to this product, and the original purchaser and any user or owner shall have no other remedy and no claim for incidental or consequential damages. Some states do not allow limitations on how long an implied warranty lasts or do not allow the exclusion or limitation of incidental or consequential damages, so the above limitation and exclusion may not apply to you.

This warranty gives specific legal rights and you may also have other rights which vary from state to state.

R. L. DRAKE COMPANY

540 Richard Street • Miamisburg, Ohio 45342

**DRAKE**



DRAKE

RV7

REMOTE VFO

MODEL 1338

**INSTRUCTION
MANUAL**



©R. L. DRAKE COMPANY 1978

PRINTED IN U.S.A.



RV-7 REMOTE VFO MODEL 1338

General Description

The RV-7 is designed for use with the TR-7 and offers the operator a high degree of frequency control flexibility. The RV-7 can be employed for transmit, receive or transceive frequency control or can be turned off to allow transceive frequency control from the TR-7. For added convenience, the TR-7 RIT control line is applied to the RV-7 in the receive mode. A spot switch allows the RV-7 and TR-7 PTOs to be zero beat in split mode operation. The unit is housed in a cabinet which is styled to match the TR-7.



Installation

To install the RV-7, simply connect the control cable to the 8 pin connector located on the rear of the TR-7. A 4 foot cable is provided for ease of location by the operator. See the TR-7 manual for the location of this connector.

Operation

The RV-7 has three controls: the main tuning dial, the function select control and spot switch.

The main tuning control determines the frequency of the VFO and is calibrated in exactly the same fashion as the transceiver VFO. The RV-7 function control has four positions: OFF, RCV, RCV/XMIT, and XMIT. The green LED indicates when the RV-7 is controlling the frequency of the TR-7.

In the *OFF* position, the transceiver will transceive normally using the internal PTO.

In the *RCV* position, the green LED will light in receive, indicating that the RV-7 PTO is enabled. It will extinguish in transmit. In this position, the RV-7 controls only the received frequency. The PTO in the TR-7 controls the transmit frequency.

In the *RCV/XMIT* position, both the transmit and receive frequencies are determined by the RV-7. The TR-7 PTO is disabled. The green LED will light indicating that the RV-7 has control both in transmit and receive.

In the *XMIT* position, the RV-7 controls only the transmit frequency. The receive frequency is determined by the TR-7 PTO. The green LED will light only when the TR-7 is in transmit.

The *SPOT* button is used for zero beating the RV-7 PTO with the TR-7 PTO. When the SPOT switch is depressed, the green LED will light indicating the RV-7 PTO is enabled. Be sure when using the SPOT button that the RIT is off. The RIT sensitivity between the PTOs may not be equal leading to errors in the zeroing of the two PTOs. When in SPOT, some spurious signals will be created, be sure to pick the loudest, widest signal when zeroing the two PTOs. The TR-7 will not transmit with the SPOT switch depressed.



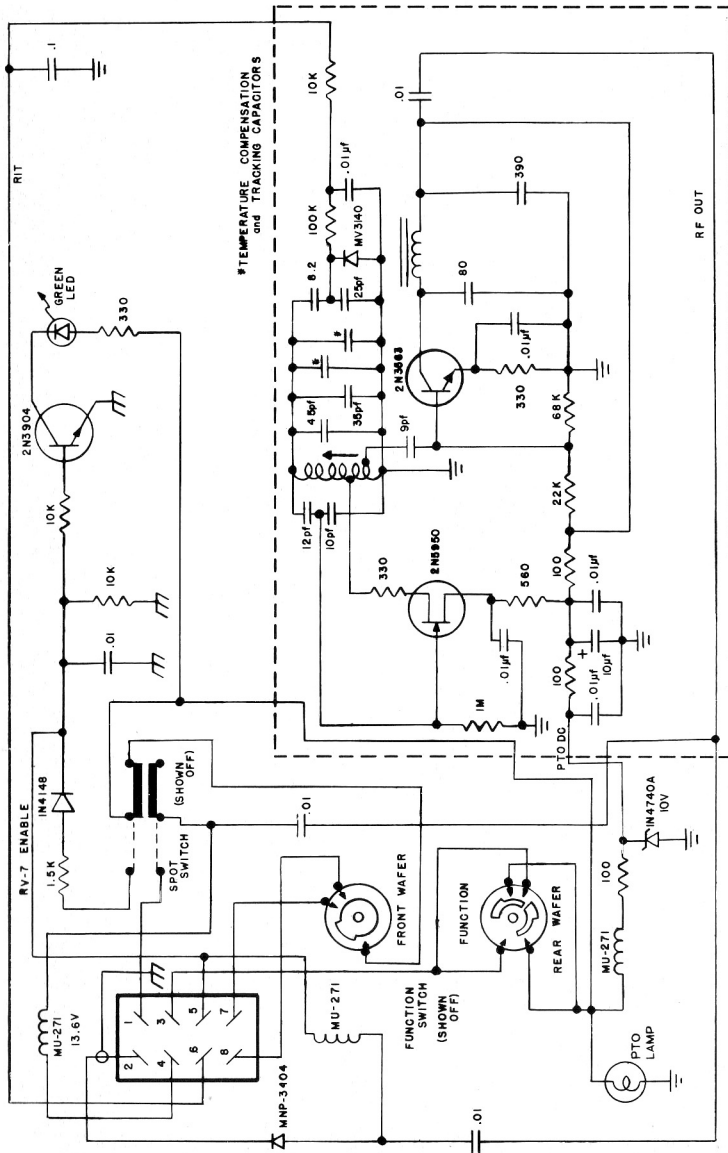
Service Data

The RV-7 will be checked and aligned at the factory for a nominal fee if there is no evidence of tampering. Transportation charges are extra. Any necessary repairs will be made on a time and materials basis. Please write or call the factory for authorization before returning your unit for alignment or service. Address your requests for authorization to:

R. L. DRAKE COMPANY
540 Richard Street
Miamisburg, OH 45342
ATTN: Customer Service Department
Telephone: (Area Code 513) 866-3211
Telex: 288-017

Alignment

The RV-7 is very carefully aligned at the factory and should require no further adjustment. If a tracking error in the VFO is noted, the unit should be returned to the factory.



NOTES:

